

5/31 DOCKSIDE DRIVE, MILDURA, VIC



View on Google Maps



## Luxury Living on the Murray River.

Luxurious 3 storey, 5 bedroom apartment only metres from the Murray River and walking distance to the Mildura CBD.

- Striking contemporary three story apartment with double garage and internal elevator
- Multiple balconies with views of the Murray River, Chaffey Bridge and Marina
- 5 large bedrooms, 4 bathrooms and 3 living areas with open plan luxury kitchen
- Grand sized master suite with walk in robe and indulgent ensuite
- Styled in neutral tones with ducted r/c aircon
- Easy walk along the riverfront to cafes, restaurants and the Mildura CBD

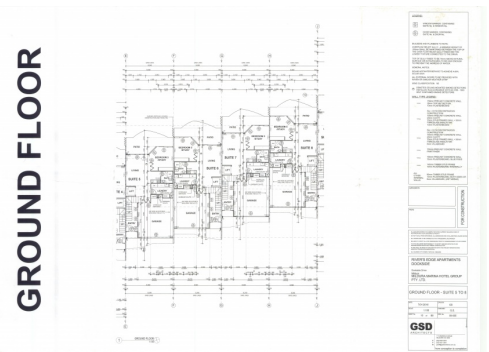
**Note - images are of apartment next door. This apartment will be finished end of September 19'.**



**5 bed**

**3 bath**

**1 car**



20% Trade : **AU\$1,400,000 (Cash) | AU\$350,000**

**\$1,750,000**

Contact Brent Symons for further enquiries: 0438108671



bartercard