

403/17-19, WEST END, QLD



View on Google Maps



Close to the river, neat apartment in



1 bed

1 bath

1 car

- Just 2.5km from Brisbane's CBD
- 5 minutes drive from Mater Hospital and Health Precinct
- 150 metres from Brisbane River Parks and bicycle track
- one block from Aldi Supermarket and Main Bus Stop

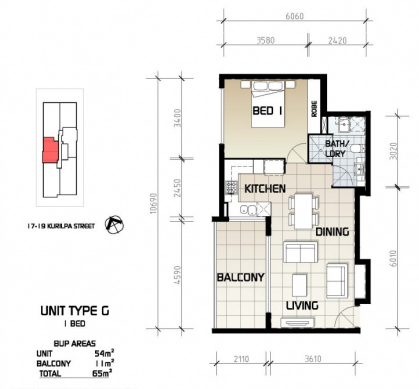
This spacious apartment's open plan living design boasts 2.7m high ceilings and oversized windows to take advantage of natural light and airflow. With river breezes flowing freely over your private balcony through 2.6m stacker doors, you can sit back and enjoy the Brisbane climate from your living area.

Bedrooms offer size and space with storage in the walk-in robes and ensuite to the master, making the bedrooms private, functional and luxurious.

This apartment is fitted with outstanding features and design including:

- Stone bench tops and European appliances (Miele) including a gas cooktop and electric oven
- Contemporary stylish living areas with ageless finishes
- Air-conditioning to all bedrooms and living
- Private balconies

WEST END
KURILPA
APARTMENTS



Body corporate is \$3000 per annum

Management fee is 7% plus GST

20% Trade : **AU\$332,000 (Cash) | AU\$83,000 (Trade)**

\$415,000

Contact Bridgette Lee for further enquiries: 0401 135 906



bartercard