

2-6 LAND STREET, TOOWONG, QLD



View on Google Maps



Landmark Toowong

Update 11th of May 2016 - We have 6 units remaining: 308, 408, 409, 708, 709, 1009
Completion is due for April 2017. The Transfer slab is in place now on the 2nd level so the building should go up rapidly from here.

Landmark Toowong features a distinctive and captivating architectural design which maximises every aspect of the superb location. Interiors are genuinely spacious, functional and feature the best in quality European appliances and stylish finishes. Every design features ample storage, striking built in cabinetry, spacious multipurpose areas or study areas.

Project amenities include large outdoor pool, extensive landscaped sundeck and gymnasium overlooking the pool.

Estimated unfurnished rental \$40000 per week
Body Corporate p.a. \$3068.00-\$3692.00
Rates p.a. ~ \$1400.00-\$1600.00 excluding water & sewerage
Internal floor area: 63-66m²

Contact Nick Holmes for further enquiries: 0400 591 275

Visit www.landmarktoowong.com.au and download the brochure for more info.

* Starting price does not include the secured parking. Starting price of The Parisian with parking-\$422,500

For current unit availability and pricing, refer to attached document

20% Trade : AU\$319,600 (Cash) | AU\$79,900 (Trade)

AU\$399,500

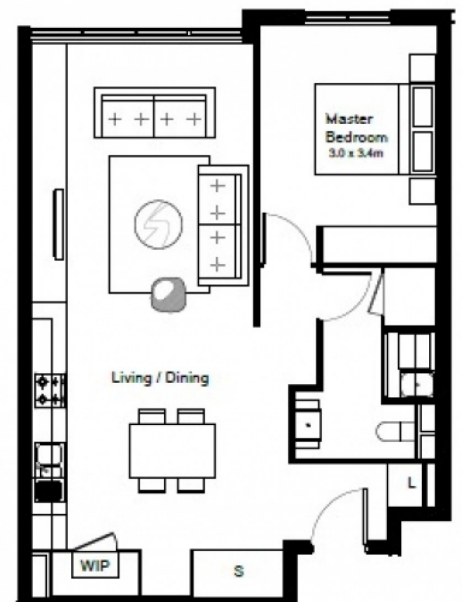
Contact Nick Holmes for further enquiries: 0400 591 275



1 bed



1 bath



bartercard