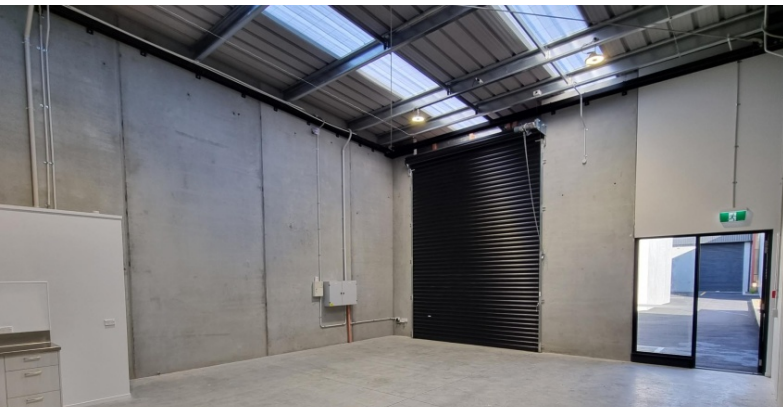


# UNIT 1 OR UNIT 2/15 EARTHMOVER CRESCENT, BURI



View on  
Google Maps



## Earthmover Crescent Units for Sale

The industrial property sector holds a strong position within the Waikato commercial market and it is easy to understand why. The structures are built to last and with quality design they are inherently flexible as they service a wide range of business uses and industries. This supports leasing demand and strong resale prospects. Industrial vacancy is also at historical lows with strong demand from both owner-occupiers and rental-occupiers.

We are offering for sale Unit 1 or Unit 2 @ 79sqm for \$429,000 each with 20% payable in Bartercard Trade Dollars. These units are a superb opportunity for owner occupiers and investors to purchase at affordable levels.

This site was selected as a preferred location for the development owing to its easy access to the motorway interchange, The Base and catchment of residential precincts to the north including Pukete and the rapidly growing Rotokauri. Attributes that have also attracted large corporate neighbours including Porters, Mainfreight and NZ Post.

For more information click the link below:

<https://protect-au.mimecast.com/s/anfvCQnMAvu26B9sx-xEU?domain=earthmovercrescent.co.nz/>

20% Trade : **NZ\$343,200 (Cash) | NZ\$85,800 (Trade)**

# \$429,000.00

Contact Duarne Lankshear for further enquiries: 021 357 128



bartercard